

Biz Apartment

CONTENTS

Arrival

- Welcome
- Check-In

House Manual

- Room Keys
- Room Rules
- In-Room Amenities
- Housekeeping

Attractions

- Drottningholm Palace
- Sergels torg Square
- Museum of Medieval Stockholm
- Royal Palace
- Open Air Museum "Skansen"

Places to Eat

- Restaurang Sorbon
- Thai Sweet Chili Restaurant
- Bistro Bromma

Activities

- Haga Royal Park, Stockholm
- Stureplan Stockholm
- ABBA Museum
- Vasa Museum
- Stockholm Royal Bridges and City Center Cruise
- Swedish Museum of Photography

Useful Contacts

- Emergency Services
- Underground
- Hospital
- ATM
- Supermarket
- Laundry

CONTENTS

Departure

- Checkout
- Directions to Airport
- Directions to nearest railway station
- Directions to the Bus Station in Sweden

Welcome



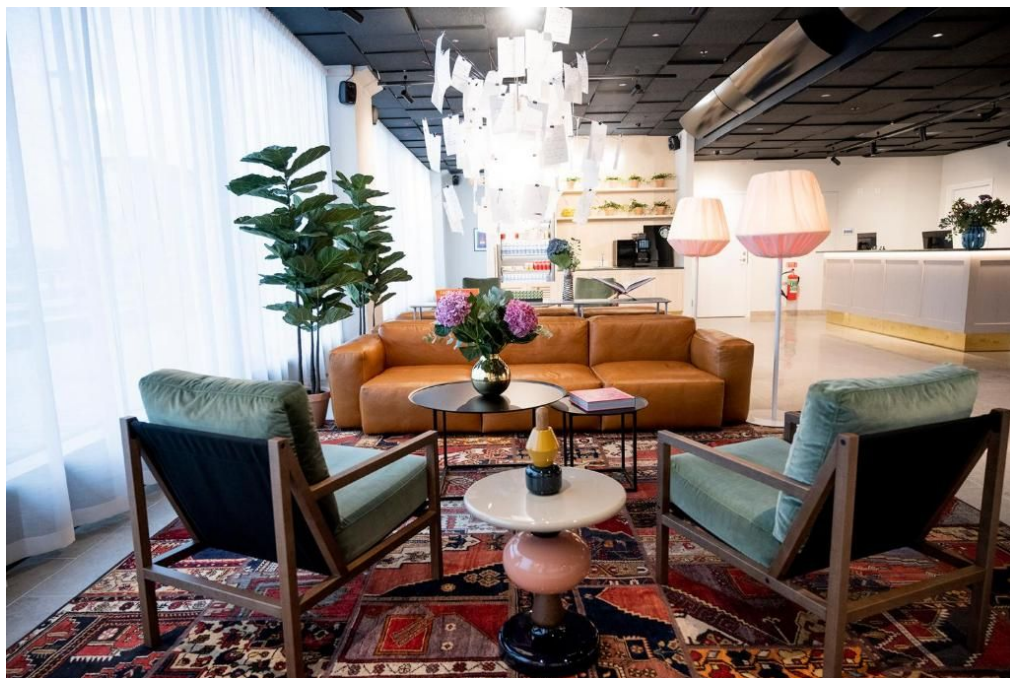
Köpsvängen 18, 168 67 Bromma Stockholm, Sweden

Welcome to the Biz Apartment Bromma! Köpsvängen 18, 168 67 Bromma Stockholm, Sweden. We offer comfort, tastefully furnished living and flexibility for our business travellers. The Biz Apartment Bromma is an aparthotel located in Stockholm, 5.9 km and 6 km from Friends Arena and Drottningholm, respectively. Additionally, its convenient location in Bromma provides easy access to both Stockholm city center and the beautiful nature surrounding the area. At Biz Apartment Bromma you will feel at home.

Website: bizapartmenthotel.se



Check-In



- Check-In Time: 3:00 PM
- Front Desk: Open 24/7
- Upon arrival, please check in at the front desk to receive your room key card.
- Check out: 12:00 AM

- Luggage storage
- Parking (on site)

Room Keys



Your room key card provides access to your room and the hotel facilities. Please keep it safe.

Room Rules



- Please respect quiet hours between 10:00 PM and 8:00 AM.
- No smoking rooms.
- Pets are not allowed.

In-Room Amenities



- Complimentary Wi-Fi.
- Cable TV.
- Mini-fridge.
- Coffee and tea facilities.
- Iron and ironing board.
- Hairdryer
- Own kitchen
- Family rooms

Housekeeping



Daily housekeeping services provided

Drottningholm Palace



Drottningholm Palace, 178 93 Drottningholm, Sweden

- Address: Drottningholm Palace, 178 93 Drottningholm

- Website: www.kungligaslotten.se

- Description: Drottningholm Palace, located in Stockholm, Sweden, is a must-visit for tourists. This majestic palace, dating back to the 17th century, offers a glimpse into Sweden's royal history and architecture. Visitors can explore the lavish interiors, including the opulent royal apartments, adorned with intricate artwork and furnishings. The palace is also surrounded by stunning gardens and a picturesque lake, providing a serene setting for leisurely strolls. Additionally, Drottningholm Palace is a UNESCO World Heritage Site, recognized for its cultural significance and preservation of Swedish heritage.



Directions on Google maps

Sergels torg Square



111 57 Stockholm, Sweden

- Address: 111 57 Stockholm, Sweden

- Description: Sergels torg Square in Stockholm, Sweden, is a vibrant hub in the heart of the city. Tourists should visit this bustling square for its central location and lively atmosphere. The square features modern architecture, including the iconic glass obelisk known as the Kristallvertikalaccent, which adds to its unique charm. Visitors can enjoy shopping at nearby boutiques, dine at trendy cafes, or simply people-watch amidst the bustling activity. Additionally, Sergels torg hosts various cultural events and concerts, making it a dynamic cultural center in Stockholm. It's a must-visit destination to experience the pulse of the city and immerse oneself in its urban energy.



Directions on Google maps

Museum of Medieval Stockholm



Strömparterren 3, 111 30 Stockholm, Sweden

- Address: Strömparterren 3, 111 30 Stockholm, Sweden

- Website: medeltidsmuseet.stockholm

- Description: This museum offers an immersive experience, showcasing artifacts and exhibits that depict life in medieval Stockholm. Visitors can explore reconstructed medieval buildings, learn about daily life, trade, and culture during that era. The museum's interactive displays and multimedia presentations provide a fascinating insight into Stockholm's medieval past. Whether you're a history enthusiast or simply curious about the city's origins, a visit to the Museum of Medieval Stockholm offers a captivating journey back in time.



Directions on Google maps

Royal Palace



Kungliga slottet, 107 70 Stockholm, Sweden

- Address: Kungliga slottet, 107 70 Stockholm, Sweden

- Website: www.kungligaslotten.se

- Description: You should visit the Royal Palace in Stockholm, Sweden, to experience the grandeur and history of the Swedish monarchy. This magnificent palace, with over 600 rooms, is one of the largest royal palaces in Europe and offers guided tours for visitors to explore its opulent interiors. Highlights include the Royal Apartments, the Treasury, and the Royal Chapel, all showcasing exquisite architecture, furnishings, and royal artifacts. Witnessing the daily changing of the guard ceremony is also a memorable experience. Additionally, the palace hosts various exhibitions, events, and cultural performances throughout the year, providing visitors with a comprehensive insight into Sweden's royal heritage and contemporary cultural scene. A visit to the Royal Palace is an essential part of any Stockholm itinerary, offering a glimpse into the country's rich history and royal traditions.



Directions on Google maps

Open Air Museum "Skansen"



Djurgårdsslätten 49-51, 115 21 Stockholm, Sweden

- Address: Djurgårdsslätten 49-51, 115 21 Stockholm, Sweden

- Website: skansen.se

- Description: Skansen Open Air Museum in Stockholm, Sweden, is a captivating destination for tourists seeking to experience Swedish culture and history. Spanning over 75 acres, Skansen features traditional Swedish buildings from different regions and time periods, offering visitors a glimpse into the country's past. Tourists can explore over 150 historic buildings, including farmhouses, windmills, and workshops, all authentically preserved and furnished. Additionally, Skansen is home to a variety of Scandinavian wildlife, including bears, wolves, and moose, making it a unique outdoor experience. Cultural events, demonstrations, and festivals are held regularly, allowing visitors to immerse themselves in Swedish traditions and folklore.



Directions on Google maps

Restaurang Sorbon



Kvarnbacksvägen 135, 168 74 Bromma, Sweden

- Address: Kvarnbacksvägen 135, 168 74 Bromma, Sweden

- Website: www.sorbon.se

- Description: Restaurang Sorbon, situated in Stockholm, Sweden, offers a unique dining experience that combines French cuisine with a touch of Scandinavian flair. The restaurant's elegant ambience and stylish decor create a sophisticated setting perfect for a memorable meal. Visitors can indulge in a diverse menu. With its central location and warm hospitality, this establishment is a must-visit for tourists.



Directions on Google maps

Thai Sweet Chili Restaurant



Ulfundavägen 176, 168 67 Bromma, Sweden

- Address: Ulfundavägen 176, 168 67 Bromma, Sweden

- Website: thaisweetchili.gastrogate.com

- Description: Thai Sweet Chili, located in Stockholm, Sweden, offers an enticing culinary experience with its authentic Thai cuisine. Visitors to this establishment can expect a delightful array of traditional Thai dishes prepared with fresh ingredients and aromatic spices. From savory curries to flavorful stir-fries and aromatic soups, Thai Sweet Chili provides a diverse menu that caters to a variety of tastes and preferences. Additionally, the restaurant's cozy ambiance and welcoming atmosphere create the perfect setting for enjoying a meal with friends or family. Whether you're a seasoned Thai food enthusiast or new to the cuisine, Thai Sweet Chili promises to impress with its delicious flavors and genuine Thai hospitality. Don't miss the chance to savor the exotic flavors of Thailand right in the heart of Stockholm at Thai Sweet Chili.



[Directions on Google maps](#)

Bistro Bromma



Spångavägen 138, 168 59 Bromma, Sweden

- Address: Spångavägen 138, 168 59 Bromma

- Website: www.bistrobromma.com

- Description: Bistro Bromma, located at Spångavägen 138, 168 59 Bromma, Stockholm, Sweden, is a charming dining establishment offering a delightful culinary experience. With its cozy atmosphere and welcoming ambience, Bistro Bromma is the perfect spot for enjoying a meal with friends or family. The menu features a variety of delicious dishes, including both Swedish specialties and international cuisine, prepared using fresh, locally-sourced ingredients.



Directions on Google maps

Haga Royal Park, Stockholm



Hagalund, Solna, Sweden

- Address: Hagalund, Solna, Sweden
- Website: www.kungligaslotten.se

Hagaparken is located along the western shoreline of Brunnsviken and is a part of the Royal National City Park. Within the park are Haga Palace, King Gustav III's Pavilion, the Chinese Pavilion, the Haga Echo Temple, the Turkish Kiosk, an older castle ruin (which is not really a ruin as it is the remains of a castle never finished) and several other interesting buildings on the grounds (such as the peculiar Copper Tents and also the Butterfly House). Ulriksdal Palace (Swedish: Ulriksdals slott) is a royal palace situated in Hagaparken. Haga Park is perhaps Sweden's foremost example of an English landscape park and also known as the "Gustavian Park" as it was initiated by Gustav III.



Directions on Google maps

Stureplan Stockholm



Stureplan, Östermalm, Stockholm, Sweden

Stureplan is a public square in central Stockholm, between Normalm and Östermalm. The square connects the major streets Kungsgatan, Birger Jarlsgatan and Sturegatan. The buildings around the

square house offices of banks and other financial institutions, as well as several corporate headquarters. Some of the country's most famous and expensive restaurants and bars are located in the area around Stureplan. Some examples are Sturehof, Spy Bar, Riche, Laroy, Hell's Kitchen, East and Sturecompagniet. Shops in the area include Versace, Hugo Boss, Gucci, and LV.

In Sweden, Stureplan has also become a well-known symbol for exclusivity since the major refurbishments during the 1980s.

Close to Stureplan is the park Humlegården with the National Library of Sweden. Stureplan is connected to Östermalmstorg metro station of the Stockholm Metro.



Directions on Google maps

ABBA Museum



Djurgårdsvägen 68, 115 21 Stockholm, Sweden

- Address: Djurgårdsvägen 68, 115 21 Stockholm, Sweden
- Website: abbathemuseum.com

ABBA The Museum is a Swedish interactive exhibition about the pop band ABBA that opened in Stockholm, Sweden in May 2013. ABBA's collected works are showcased in a contemporary, interactive setting at Djurgården, Stockholm.



Vasa Museum



Galärvarsvägen 14, 115 21 Stockholm, Sweden

- Address: Galärvarsvägen 14, 115 21 Stockholm, Sweden

- Website: www.vasamuseet.se

- Description: The Vasa Museum (Swedish: Vasamuseet) is a Swedish maritime museum located in Stockholm on the island of Djurgården. The museum displays an almost completely preserved 17th-century 64-gun ship, the Vasa, which sank on August 10, 1628 during its first trip to sea in Stockholm harbor. The reason was the unsuccessful design of the ship, due to which strong gusts of wind tilted the ship so that water began to quickly fill the hull through the open cannon ports. The ship lay at the bottom of the harbor for three centuries and was rediscovered by explorer Anders Fransen [sv] and diver Per Edwin Felting in 1956. The lifting of the sailing ship weighing about 700 tons was carried out in 1957–1961. The Vasa Museum was opened in 1990 and, according to information on the official website, is the most visited museum in Scandinavia. Together with other museums, for example, the Stockholm Maritime Museum, it belongs to the group of Swedish national maritime museums.



Directions on Google maps

Stockholm Royal Bridges and City Center Cruise



- Address: Stockholm, Sweden

- Website: guidetoEurope.com

This sailing tour is one of the most popular activities Stockholm has to offer. This popular sailing tour will take you to several famous sites. This tour will take you to some of the top rated sites: Stockholm Canals, Riddarholmen and Red Sightseeing. The duration of the entire event is about 1 hour. The starting point for this interaction will be the "Green" Hop on Hop off boat Stromma. During this adventure you will see some of the best local attractions.

Swedish Museum of Photography

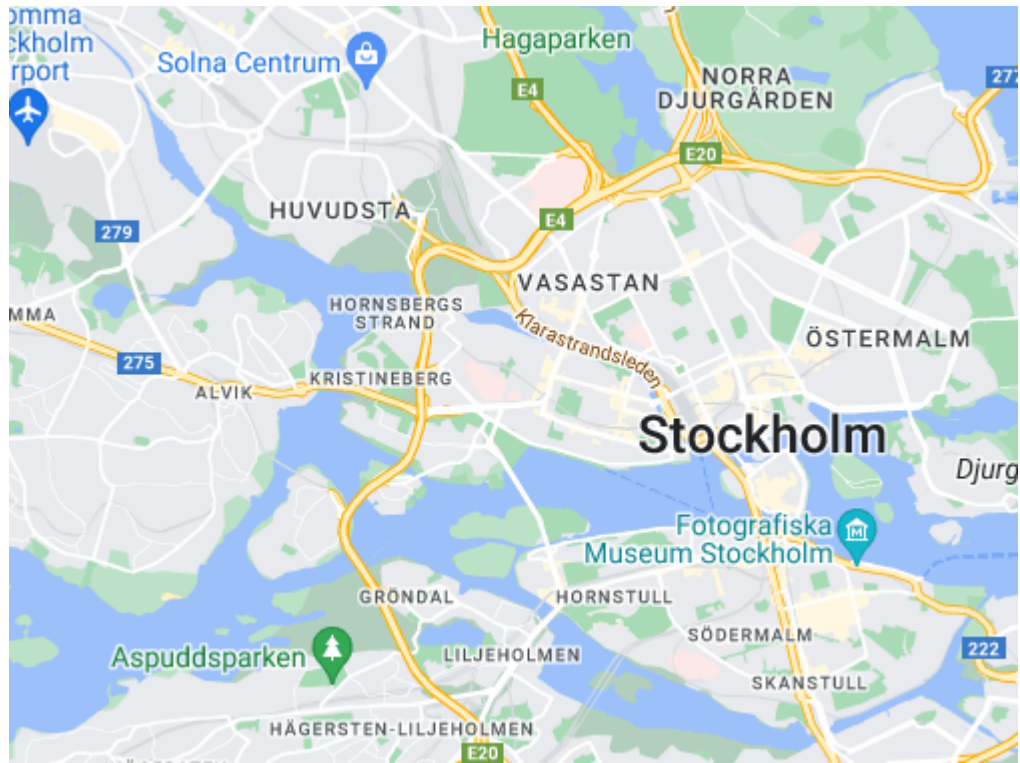


Stadsgårdshamnen 22, 116 45 Stockholm, Sweden

- Address: Stadsgårdshamnen 22, 116 45 Stockholm

- Website: stockholm.fotografiska.com

Fotografiska is a centre for contemporary photography in the Södermalm district of Stockholm, Sweden that was founded by brothers Jan and Per Broman and opened on 21 May 2010. In March 2021, it merged with NeueHouse and is operated by Yoram Roth and Josh Wyatt under the parent company CultureWorks. It offers visitors a unique opportunity to explore the rich history and evolution of photography in Sweden and beyond. With rotating exhibitions featuring both contemporary and historical works, the museum provides insight into the cultural and artistic significance of photography, making it a must-visit destination for photography enthusiasts and tourists alike in Stockholm.



Directions on Google maps

Emergency Services



Police: 112 (emergency)

Ambulance and Fire Brigade: 112 (emergency)

Underground



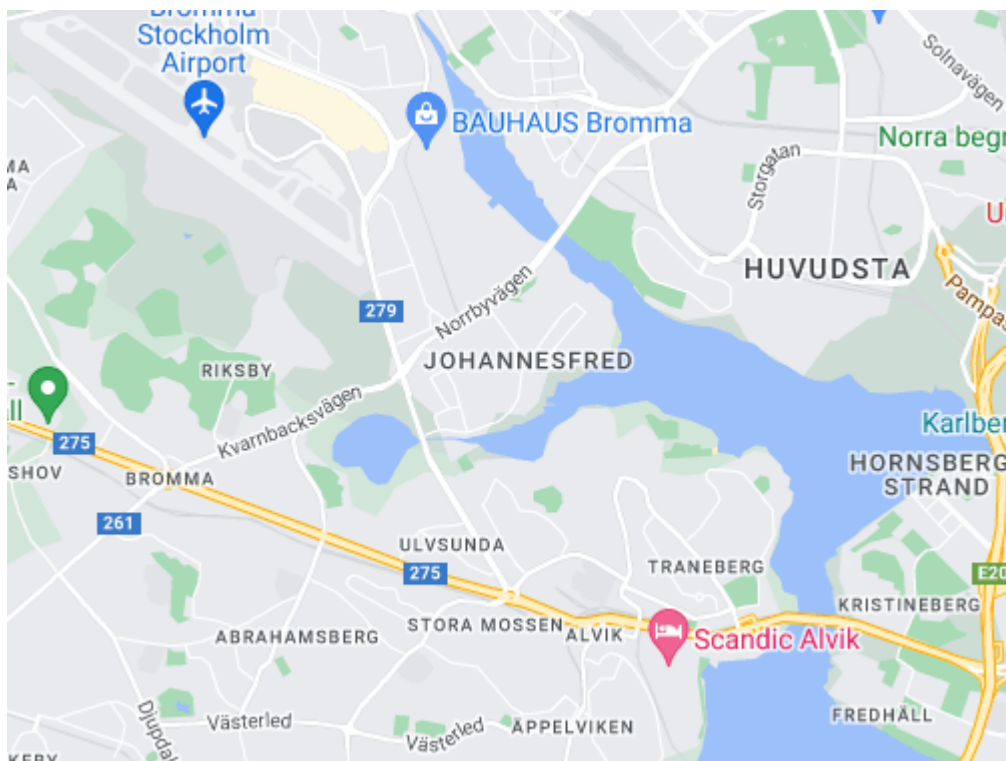
Alvik station, 167 51 Bromma, Sweden

The Stockholm Metro (Swedish: Stockholms tunnelbana)

- Website: www.sl.se

The route to the nearest metro station

Alvik Metro Station Exit Biz Apartment Bromma and head southeast on Mariehällsvägen toward Alviksvägen. Turn right onto Alviksvägen, then continue straight until you reach Alvik Metro Station.



[Directions on Google maps](#)

Hospital



Sankt Göransplan 1, 112 19 Stockholm, Sweden

Caphio Saint Göran's Hospital

Address: Sankt Göransplan 1, 112 19 Stockholm

Karolinska University Hospital Address: Anna Steckséns g 41, 171 64 Solna Sweden



Directions on Google maps

ATM

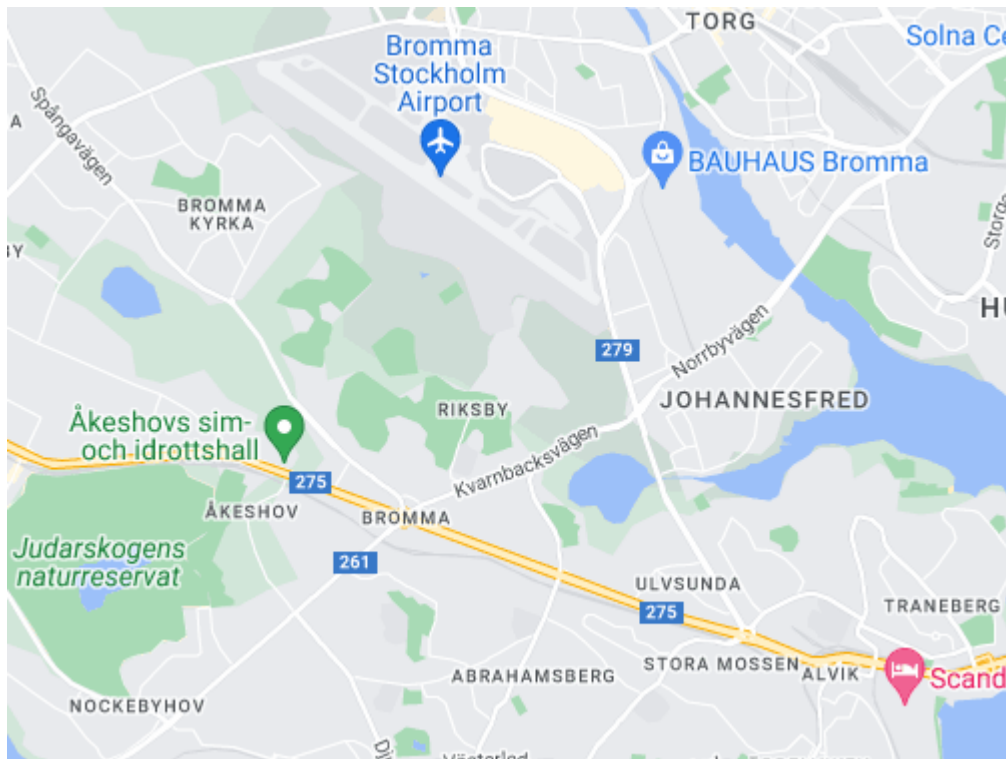


Tunnlandet 1, 3, 168 36 Bromma, Sweden

The nearest ATM to Biz Apartment Bromma in Stockholm, Sweden, is located at:

ICA Nära Brommaplan

Address: Tunnlandet 1, 3, 168 36 Bromma, Sweden



Directions on Google maps

Supermarket



Ulvsundavägen 189, 168 67 Bromma, Sweden ICA Supermarket, Sweden

Stora Coop Bromma

Address: Ulvsundavägen 189, 168 67 Bromma, Sweden ICA Supermarket

Address: Tunnlandet 1, 3, 168 36 Bromma, Sweden



Directions on Google maps

Laundry



Cleaning services in Biz Apartment Bromma

Laundry

Paid separately

Checkout



Check-Out Time: 12:00 AM

Please check out by 12:00 AM to ensure a smooth departure. If you require a late check-out, please contact the front desk in advance.

Directions to Airport



The airport closest to Biz Apartment Bromma in Stockholm, Sweden, is Bromma Airport. Here are several route options to get from Biz Apartment Bromma to Bromma Airport

- Website: www.swedavia.com

- Distance: Bromma Airport is near Biz Apartment Bromma (350 m)

Directions to nearest railway station



Centralplan 15, 111 20 Stockholm, Sweden

Stockholm Central Station Centralplan 15, 111 20 Stockholm

- Website: www.jernhusen.se

To get from Biz Apartment Bromma in Stockholm to the Central Railway Station (Centralen), you have several options using public transportation:

Metro: Take the yellow line, from the station Karlsbodavägen to Sundbybergs centrum then take red line from the station Sundbyberg to Stockholm City. Follow signs within the station for the Central Railway Station (Centralen).

Taxi: 50 -60 euros the approximate price



Directions on Google maps

Directions to the Bus Station in Sweden



111 64 Stockholm, Sweden

Stockholm Central Bus Station

- Address: 111 64 Stockholm, Sweden

Metro: Take the yellow line from the station Bromma Blocks to Alvik than the green line from Alvik to T-Centralen

Taxi: 50 - 60 € the approximate price



Directions on Google maps